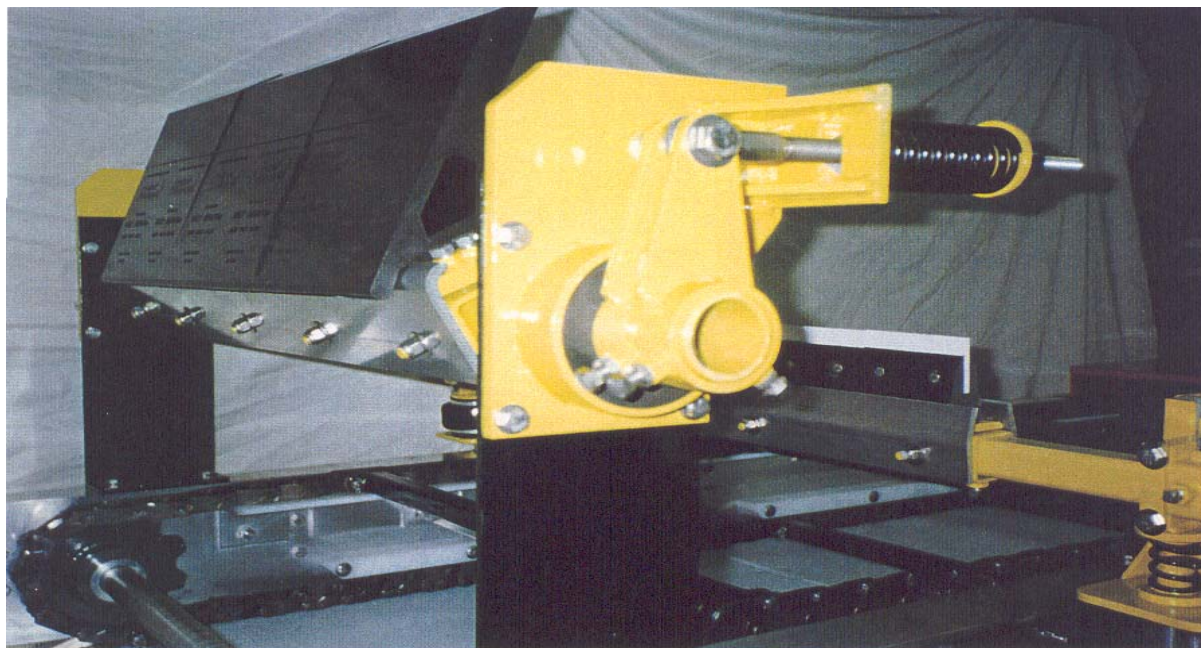


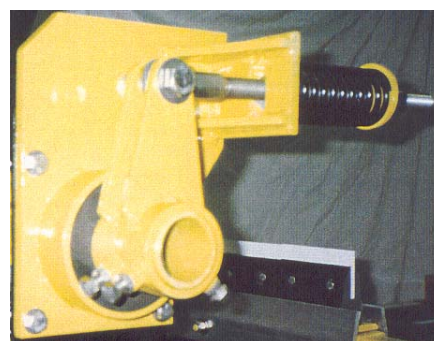
WE PROVIDE BELT CLEANING SOLUTIONS



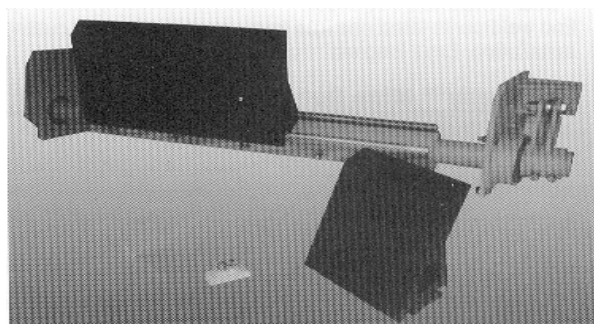
.....with the **BELT BUDDY™ MINE DUTY™ Primary Cleaner**

ENGINEERED FOR DEMANDING APPLICATIONS:

- Individual 6" and 12" long-wearing urethane blades for extended wear-life and improved cleaning.
- Shock absorbing Shock Mount Mine Duty Tensioner absorbs splice impact while maintaining constant blade contact with belt.
- Rugged Dual Spring or Air Tensioners for maximum cleaning efficiency.
- Telescoping mainframes for ease of installation.
- Retrofit blades and mainframes available.



SHOCK MOUNT MINE DUTY TENSIONER
Spring or Air Tensioners with special shock mount rubber bushings absorbs splice impacts while maintaining constant blade contact with belt.



BELT BUDDY™ MINE DUTY PRIMARY CLEANER

Mainframe assembly with individual long-wearing urethane blades

**Don't Just Buy A Belt Cleaner
... Buy A Cleaner Belt**

OPERATING SPECIFICATIONS

BELT BUDDY™ MINE DUTY PRIMARY BELT CLEANER, P/N 17100-XX

Maximum Belt Speed:	1200 FPM
Maximum Service Temperature:	Continuous - 150° F (65° C) Intermittent - 180° F (82° C)
Mounting Distance:	5.50 in. (130mm)
Wear Life (Amount of Usable Blade):	6.50 in. (163mm)
Recommended Tensioner:	Shock Mount Mine Duty Spring Tensioner, P/N 18106 Shock Mount Mine Duty Air Tensioner, P/N 18206
Applications:	Standard and Reversing

ORDERING INFORMATION:

Belt Buddy™ Mine Duty Primary Cleaner (P/N 17100-XX) includes mainframe and blades. Tensioners and mounting brackets must be ordered separately.

REPLACEMENT BLADES:

6" and 12" urethane, fire-resistant
(P/N 17166-06 & 17166-12)

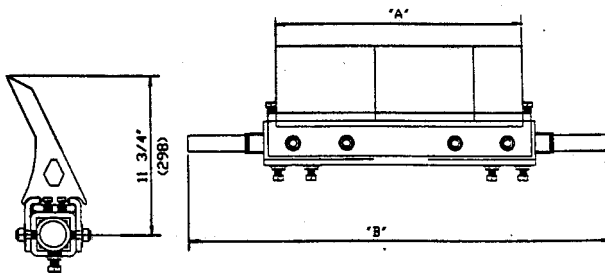
DIMENSIONAL INFORMATION

BELT BUDDY™ MINE DUTY PRIMARY CLEANER, P/N 17100-XX

Belt Width In. (mm)	No. of Blades		Belt Coverage In. (mm) "A"	Mainframe Length (max*) In. (mm) "B"	Shipping Weight Lb. (kg)
	6"	12"			
24 (500-650)	1	1	18 (457)	66 (1650)	189 (87)
30 (650-800)		2	24 (610)	74 (1850)	214 (98)
36 (800-1000)	1	2	30 (762)	84 (2100)	237 (109)
42 (1000-1200)		3	36 (914)	92 (2300)	262 (121)
*48 (1200-1400)	1	3	42 (1067)	105 (2625)	284 (131)
*54 (1400-1600)		4	48 (1219)	112 (2800)	309 (142)
*60 (1600-1800)	1	4	54 (1372)	122 (3050)	337 (152)
*72 (1800-2000)	1	5	66 (1676)	129 (315)	356 (164)
*84 (2000-2200)	1	6	78 (1981)	152 (3800)	413 (190)

* Dual Tensioners Required.
End weldments telescope into frame to eliminate field cutting mainframe during installation. Extra long mainframes are available.

Belt Buddy™ Mine Duty Primary Cleaner, P/N 17100-XX
xx= belt width

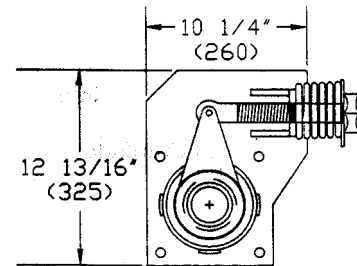


SHOCK MOUNT MINE DUTY TENSIONERS

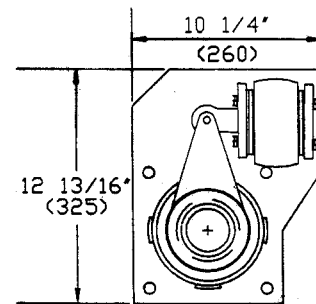
Tensioners Listed Are For Belt Buddy™ Mine Duty Primary Cleaners.

Tensioner	Belt Width In. (mm)	Part Number	Ship Wgt. Lb. ((kg)
Shock Mount Mine Duty Spring	24-42 (500-1200)	18106	61 (23)
Dual Shock Mount Mine Duty Spring	48-84 (1200-2200)	18106-2	78 (35)
Shock Mount Mine Duty Air	24-42 (500-1200)	18206	38 (17)
Dual Shock Mount Mine Duty Air	48-84 (1200-2200)	18206-2	58 (26)

Shock Mount Mine Duty Spring Tensioner, P/N 18106 (-2)



Shock Mount Mine Duty Air Tensioner, P/N 18206 (-2)



WE PROVIDE SOLUTIONS

TEL: (502) 634-3661 FAX: (502) 634-1090 e-mail: info@baker-bohnert.com Internet: www.baker-bohnert.com