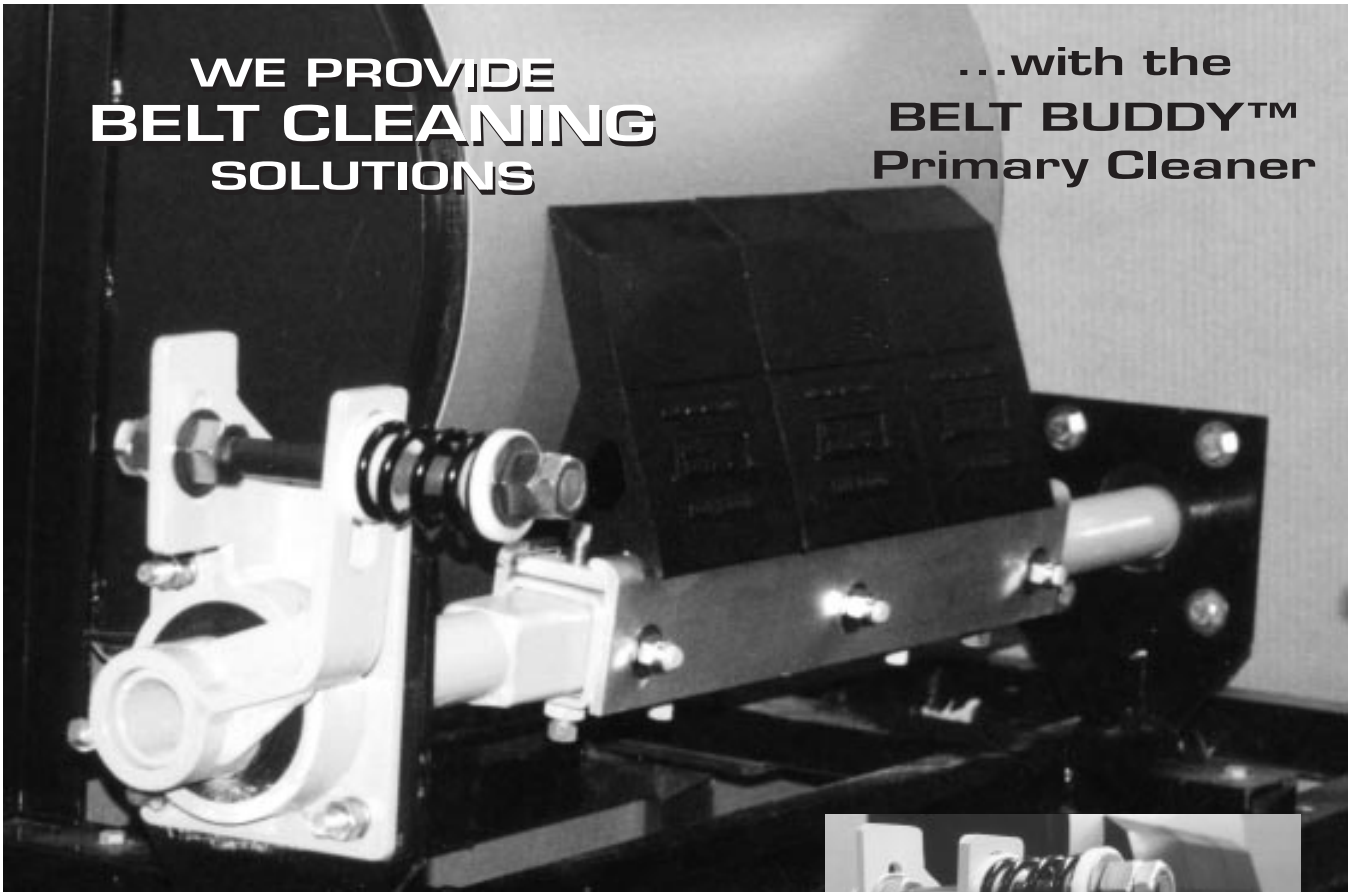


**WE PROVIDE  
BELT CLEANING  
SOLUTIONS**

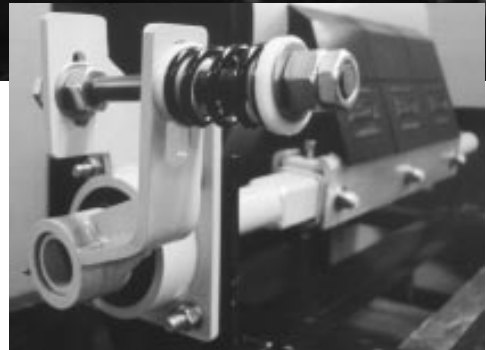
**...with the  
BELT BUDDY™  
Primary Cleaner**



**ENGINEERED FOR  
DEMANDING APPLICATIONS:**

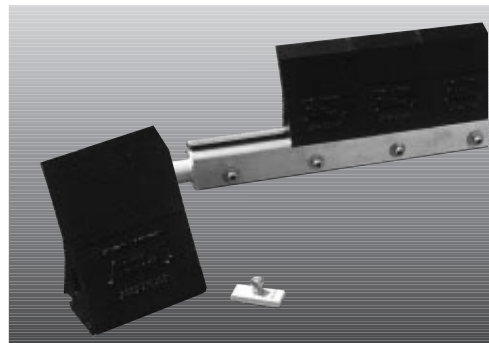
- Individual 6" urethane blades for extended wear-life and improved cleaning.
- Shock absorbing Shock Mount Spring Tensioner eliminates splice impact while maintaining constant blade contact with belt.
- Quick-release tensioning assembly allows mainframe and blades to be removed from conveyor system for safe blade replacement.
- Telescoping mainframes for ease of installation.

**Don't Just Buy A Belt Cleaner  
...Buy A Cleaner Belt**



**SHOCK MOUNT SPRING  
TENSIONER**

Shock absorbing tensioner eliminates splice impact while maintaining constant blade contact with belt.



**BELT BUDDY™  
PRIMARY CLEANER**

Mainframe assembly with individual urethane blades.

*WE PROVIDE SOLUTIONS*

**Baker  
Bohnert®**

**Tel:** (502) 634-3661 **Fax:** (502) 634-1090 **Internet:** [www.baker-bohnert.com](http://www.baker-bohnert.com)

## OPERATING SPECIFICATIONS

### BELT BUDDY™ PRIMARY BELT CLEANER, P/N 10110-XX

Maximum Belt Speed:	750 FPM (3.8 M/sec)
Maximum Service Temperature:	Continuous - 150° F (65° C) Intermittent - 180° F (82° C)
Mounting Distance:	4.50 in. (114mm)
Wear Life (Amount of Usable Blade):	4.50 in. (114mm)
Recommended Tensioner:	Shock Mount Air Tensioner, P/N 10830-A Shock Mount Spring Tensioner, P/N 10830-S

**ORDERING INFORMATION:** Belt Buddy™ Primary Cleaner (P/N 10110-XX) includes mainframe and blades. Tensioners and mounting brackets must be ordered separately.

**REPLACEMENT BLADES:** 6", Urethane, fire-resistant, (P/N 10415-06)

## DIMENSIONAL INFORMATION

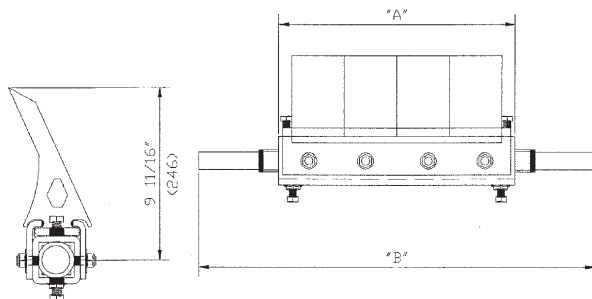
### BELT BUDDY™ PRIMARY CLEANER, P/N 10110-XX

Belt Width In. (mm)	No. of Blades	Belt Coverage In. (mm) "A"	Mainframe Length (max*) In. (mm) "B"	Shipping Weight Lb. (kg)
18 (400-500)	2	12 (305)	43 (1092)	32 (14.4)
24 (500-650)	3	18 (457)	49 (1245)	37 (16.7)
30 (650-800)	4	24 (610)	61 (1549)	46 (20.7)
36 (800-1000)	5	30 (762)	67 (1702)	53 (23.9)
42 (1000-1200)	6	36 (914)	73 (1854)	57 (25.7)
48 (1200-1400)	7	42 (1067)	79 (2007)	65 (29.3)
*54 (1400-1600)	8	48 (1219)	85 (2159)	72 (32.4)
*60 (1600-1800)	9	54 (1372)	97 (2464)	82 (36.9)
*72 (1800-2000)	11	66 (1676)	109 (2769)	94 (42.3)

\* Dual Tensioners Required.  
End weldments telescope into frame to eliminate field cutting mainframe during installation. Extra long mainframes are available.

### Belt Buddy™ Primary Cleaner, P/N 10110-XX

XX = Belt Width



### SHOCK MOUNT TENSIONERS

Tensioners Listed Are For Belt Buddy™ Primary Cleaners.

Tensioner	Belt Width In. (mm)	Part Number	Ship Wgt. Lb. (kg)
Shock Mount Air	12-48 (400-1400)	10830-A	37 (16.7)
Dual Shock Mount Air	54-72 (1400-2000)	10830-A-2	64 (28.8)
Shock Mount Spring	12-48 (400-1400)	10830-S	38 (17.1)
Dual Shock Mount Spring	54-72 (1400-2000)	10830-S-2	69 (29.7)

Mounting Brackets	Part Number	Ship Wgt. Lb. (kg)
"Z" Mounting Brackets	10240	19 (8.6)
"L" Mounting Brackets	10250	2 (0.9)

### Shock Mount Air or Spring P/N 10830-A or S (-2)

